

1. Q1 QOS Bridge

Q1 QOS Bridge is an Ethernet bridge device which performs directional Quality of Service control transparently. A typical configuration is like this:

Internet <- WAN Router <----- Q1 Bridge -----> LAN

Q1 is NOT a router, so there's no subnet routing configuration necessary. It is completely transparent to your internal network.

2. Main Menu

Console Mode

```
Uniforce Q1 QOS Bridge
Build: q1v104-001

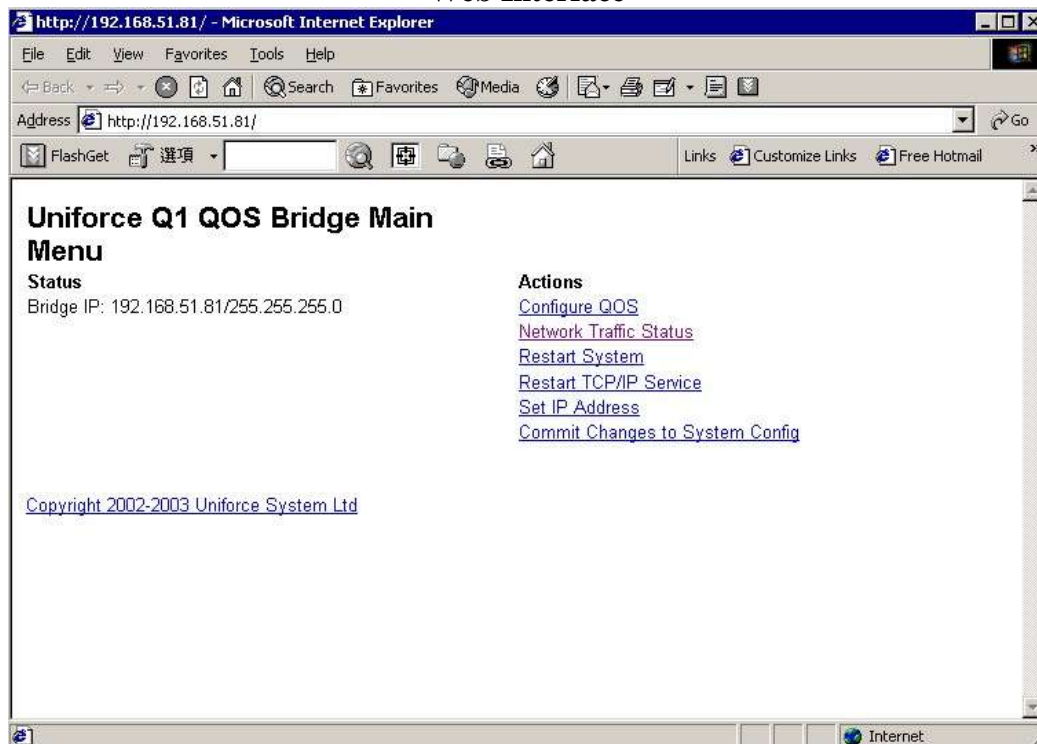
Logon as:

reboot - restart box
resnet - restart TCP/IP Service
resqos - restart QOS service
commit - commit config changes to permanent memory
setbr0 - setup bridge TCP/IP address <br0>

mreset - set to factory default (* WARNING: all current settings are erased)

ntop.hk.uniforce.net login: _
```

Web Interface



3. Set IP Address screen

Console mode: use command **setbr0** and then type the IP, netmask and gateway information as shown below:

```
ntop.hk.uniforce.net login: setbr0
IP:192.168.51.226
netmask:255.255.255.0
gateway:192.168.51.254
255.255.255.0: Unknown host
IP Set
IP Set
```

Web Interface Mode: There are three things for user to set: IP, Netmask and Gateway

Bridge IP Settings

IP Netmask Gateway

[Back to Home](#)

[Copyright 2002-2003 Uniforce System Ltd](#)

4. Configure QOS screen

QOS Configuration

1. [General Settings](#)
2. [Outgoing Bandwidth Allocation](#)
3. [Outgoing Traffic Type Priority](#)
4. [Outgoing IP Priority](#)
5. [Incoming Bandwidth Allocation](#)
6. [Incoming Traffic Type Priority](#)
7. [Incoming IP Priority](#)
8. [Apply Changes](#)
9. [Back to Main Menu](#)

[Copyright 2002-2003 Uniforce System Ltd](#)

4.1 General Settings

The user can set WAN Interface Number, WAN Bandwidth, LAN Interface Number and LAN Bandwidth from there.

General Settings

1. WAN Interface Number
2. WAN Bandwidth kbps
3. LAN Interface Number
4. LAN Bandwidth Mbps

[Back to Home](#)

Copyright 2002-2003 Uniforce System Ltd

4.2 Outgoing Bandwidth Allocation

The user can allocate the bandwidth between different priority classes. The total must be 100%. Also the user can allow or disallow bandwidth sharing between classes.

Outgoing Bandwidth Allocation

Outgoing Bandwidth Allocation

High Priority % Medium Priority % Low Priority %

Allow bandwidth sharing between classes

[Back to Home](#)

4.3 Outgoing Traffic Type Priority

The user can set maximum 15 different Destination Port and assign Priority for outgoing traffic.

Outgoing Traffic Type Priority

1. Dest Port	<input type="text" value="22"/>	Priority	<input type="text" value="High"/>
2. Dest Port	<input type="text" value="23"/>	Priority	<input type="text" value="High"/>
3. Dest Port	<input type="text"/>	Priority	<input type="text"/>
4. Dest Port	<input type="text"/>	Priority	<input type="text"/>
5. Dest Port	<input type="text"/>	Priority	<input type="text"/>
6. Dest Port	<input type="text"/>	Priority	<input type="text"/>
7. Dest Port	<input type="text"/>	Priority	<input type="text"/>
8. Dest Port	<input type="text"/>	Priority	<input type="text"/>
9. Dest Port	<input type="text"/>	Priority	<input type="text"/>
10. Dest Port	<input type="text"/>	Priority	<input type="text"/>
11. Dest Port	<input type="text"/>	Priority	<input type="text"/>
12. Dest Port	<input type="text"/>	Priority	<input type="text"/>
13. Dest Port	<input type="text"/>	Priority	<input type="text"/>
14. Dest Port	<input type="text"/>	Priority	<input type="text"/>
15. Dest Port	<input type="text"/>	Priority	<input type="text"/>

4.4 Outgoing IP Priority

The user can set 20 different IP and assign Priority for outgoing traffic

Outgoing IP Priority

1. From IP	<input type="text" value="192"/>	<input type="text" value="168"/>	<input type="text" value="51"/>	<input type="text" value="5"/>	/	<input type="text" value="32"/>	Priority	<input type="text" value="High"/>
2. From IP	<input type="text" value="192"/>	<input type="text" value="168"/>	<input type="text" value="51"/>	<input type="text" value="6"/>	/	<input type="text" value="32"/>	Priority	<input type="text" value="Medium"/>
3. From IP	<input type="text" value="192"/>	<input type="text" value="168"/>	<input type="text" value="51"/>	<input type="text" value="39"/>	/	<input type="text" value="32"/>	Priority	<input type="text" value="High"/>
4. From IP	<input type="text"/>	<input type="text"/>	<input type="text"/>	<input type="text"/>	/	<input type="text"/>	Priority	<input type="text"/>
5. From IP	<input type="text"/>	<input type="text"/>	<input type="text"/>	<input type="text"/>	/	<input type="text"/>	Priority	<input type="text"/>
6. From IP	<input type="text"/>	<input type="text"/>	<input type="text"/>	<input type="text"/>	/	<input type="text"/>	Priority	<input type="text"/>

4.5 Incoming Bandwidth Allocation

Same screen as Outgoing Bandwidth Allocation

4.6 Incoming Traffic Priority

Same screen as Outgoing Traffic Priority

4.7 Incoming IP Priority

Same screen as Outgoing IP Priority

4.8 Apply Changes

When user click this link, all the changes will be effective.

Commit Changes

```
saving configuration ...  
configuration changed  
Incoming QOS restarted  
Outgoing QOS restarted  
QOS service restarted  
Pls remember to COMMIT system changes when new QOS settings are tested OK
```

All changes are saved!

[Back to Home](#)

[Copyright 2002-2003 Uniforce System Ltd](#)

4.9 Back to Main Menu

Just return to Main Menu

5. Restart System (In console mode, use command **reboot**)

Just restart the system, all the unsaved settings will be lost

6. Restart TCP/IP Service (In console mode, use command **resnet**)

Just restart TCP/IP service

7. Commit Changes to System Config (In console mode, use command **commit**)

All changes will be saved to system memory

8. Only in console mode: **resqos**

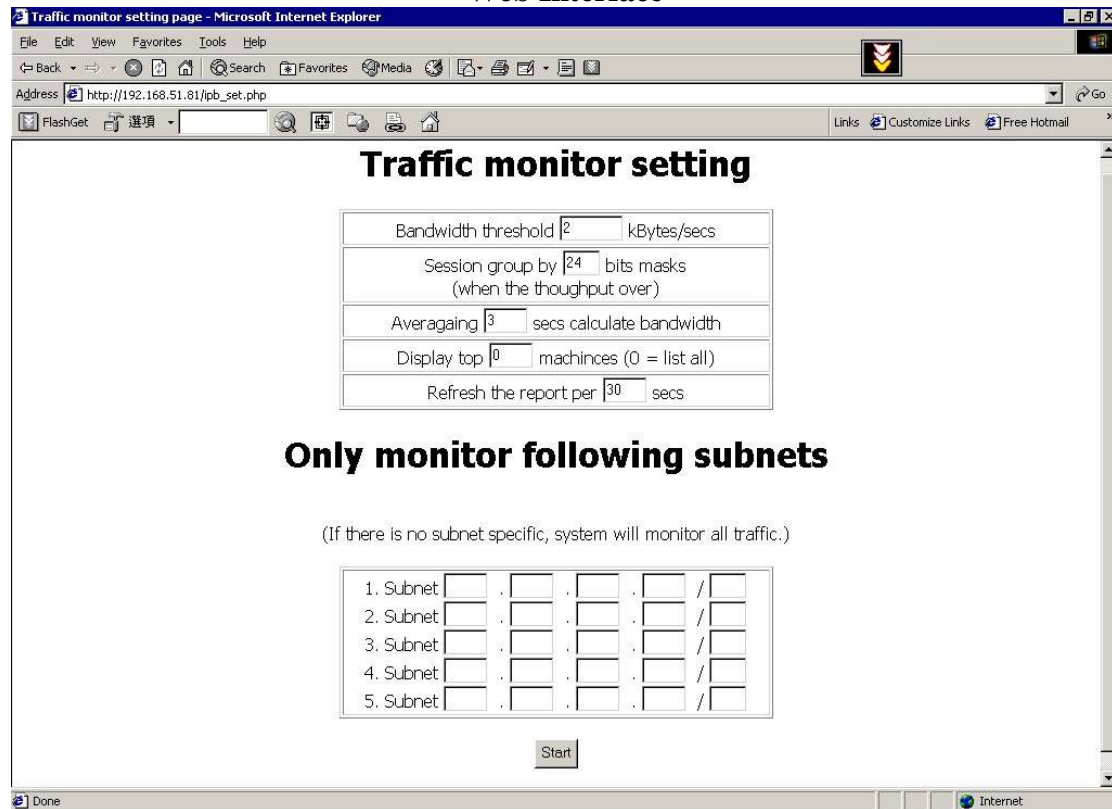
Just restart QOS service

9. Only in console mode: **mreset**

All the settings will be restored back to factory default

10. Network Traffic Status

Web Interface



Parameters used in Traffic monitor setting

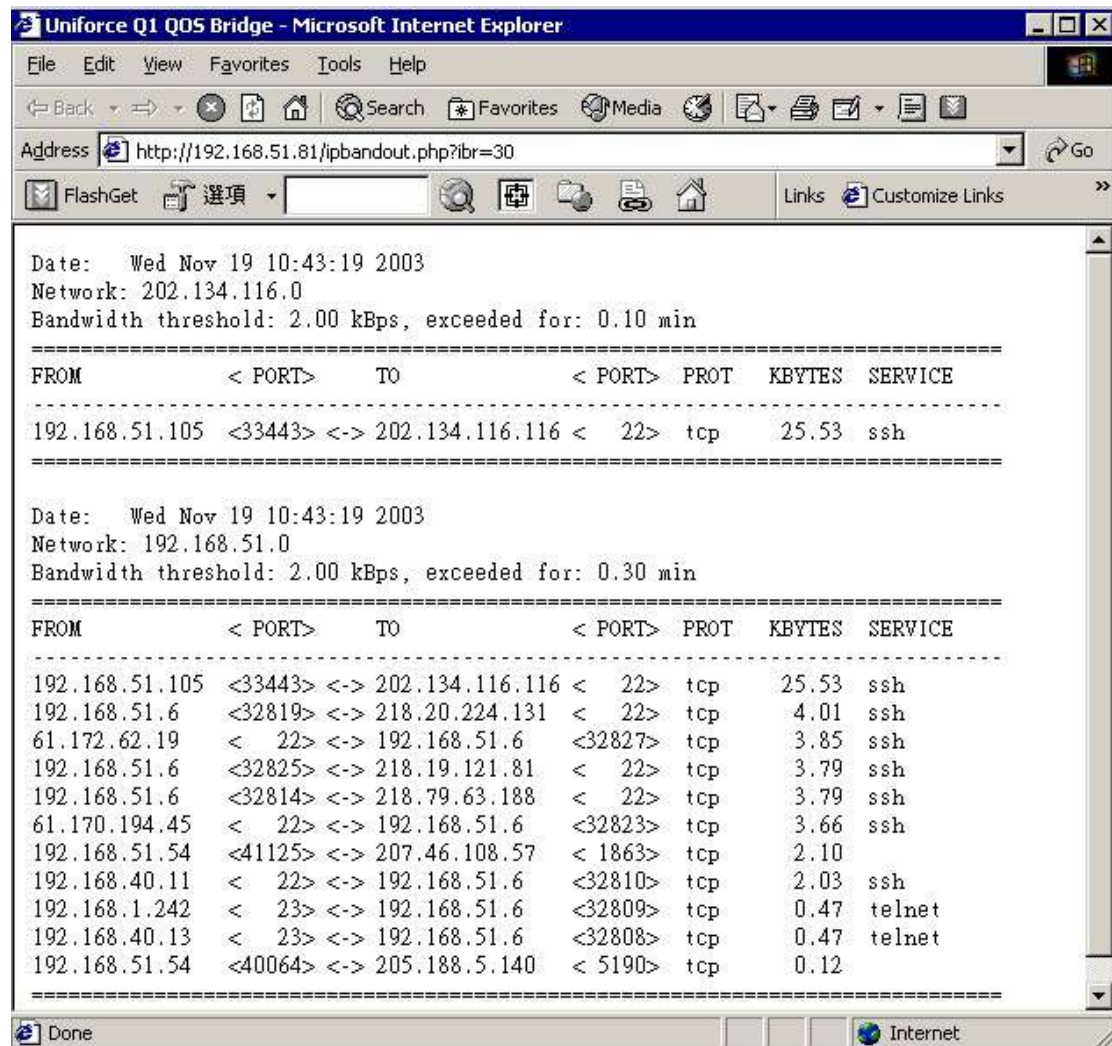
1. Bandwidth threshold n kBytes/secs – maximum bandwidth allow for each kind of traffic
2. Session group by n bits masks (when the throughput over) – when the throughput is over, the report screen will be splitted into two parts based on the subnet masks setting.
3. Average n secs calculate bandwidth – calculate bandwidth every n seconds
4. Display top n machines – display which n machines utilize most of the bandwidth (0 means list all machines)
5. Refresh the report per n secs – the report screen will refresh every n seconds

Only monitor following subnets

The user can specify at most 5 different subnets to monitor the network traffic. (If nothing entered, the system will monitor all the network traffic.)

Uniforce Q1 QOS Bridge Manual – version q1v104-002

When the user clicks start, the following screen will be shown:



This screen will refresh every n seconds based on the user settings.